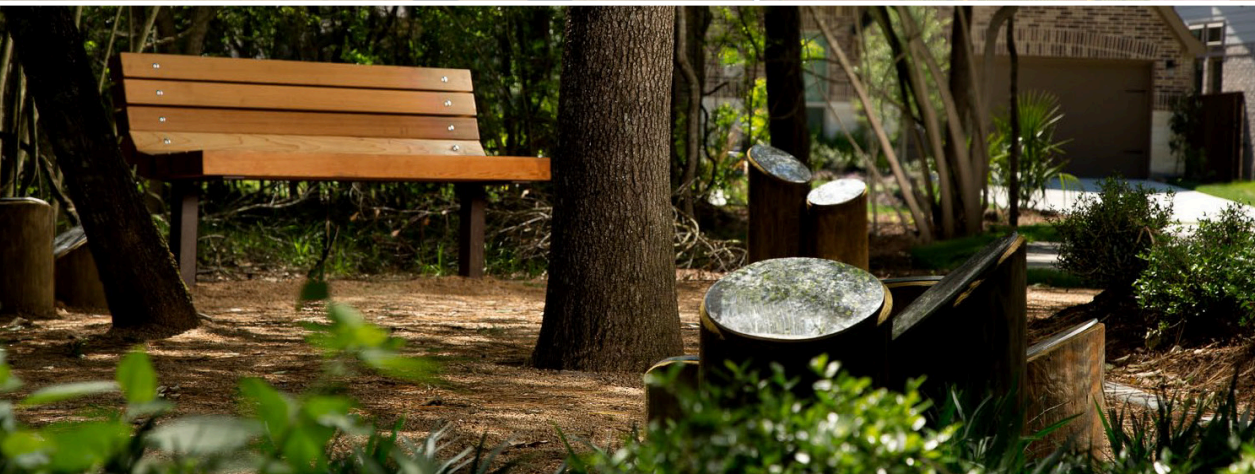


# THE MARKET AT THE GROVES

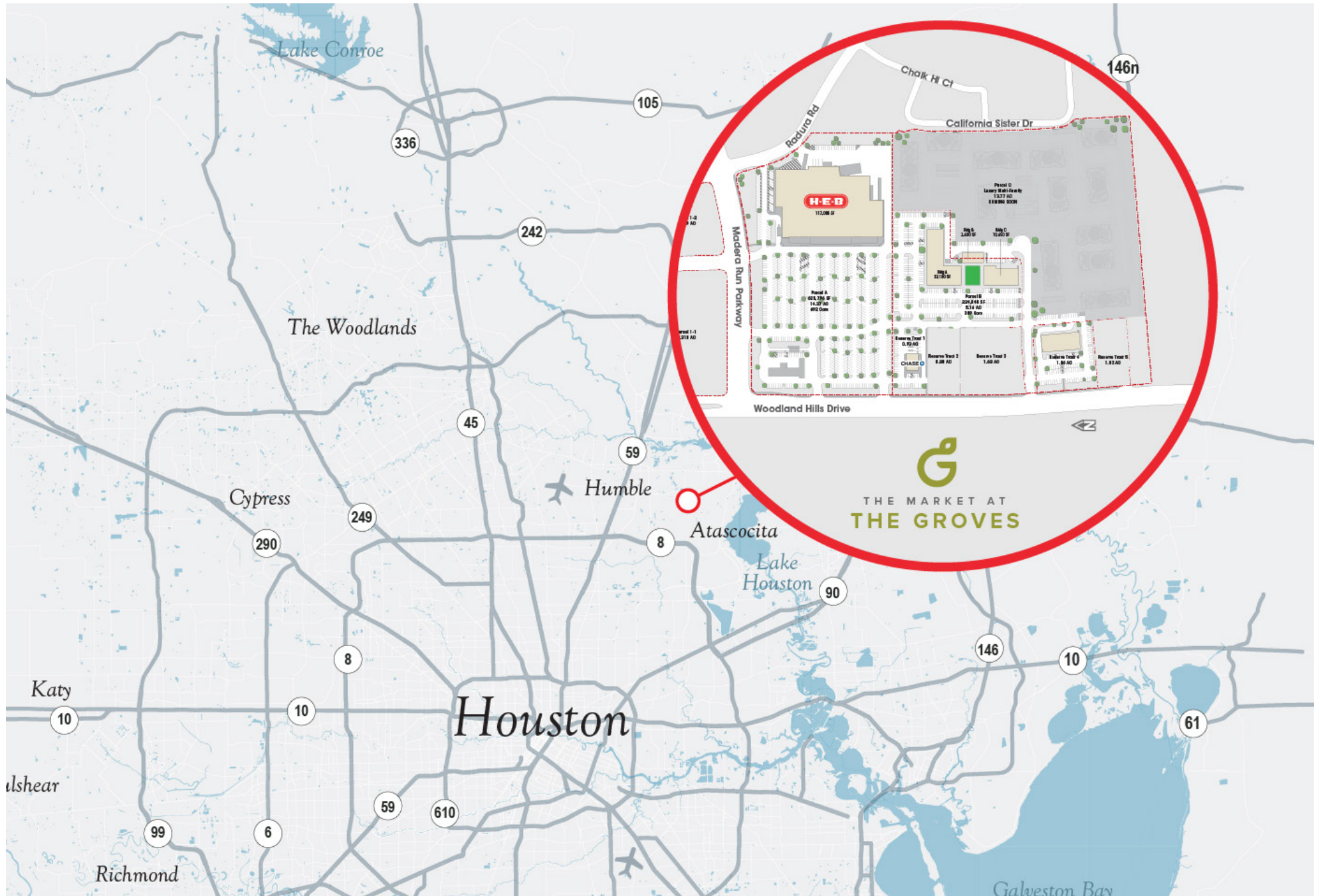
SEC of Woodland Hills Drive & Madera Run Parkway | Atascocita, Texas



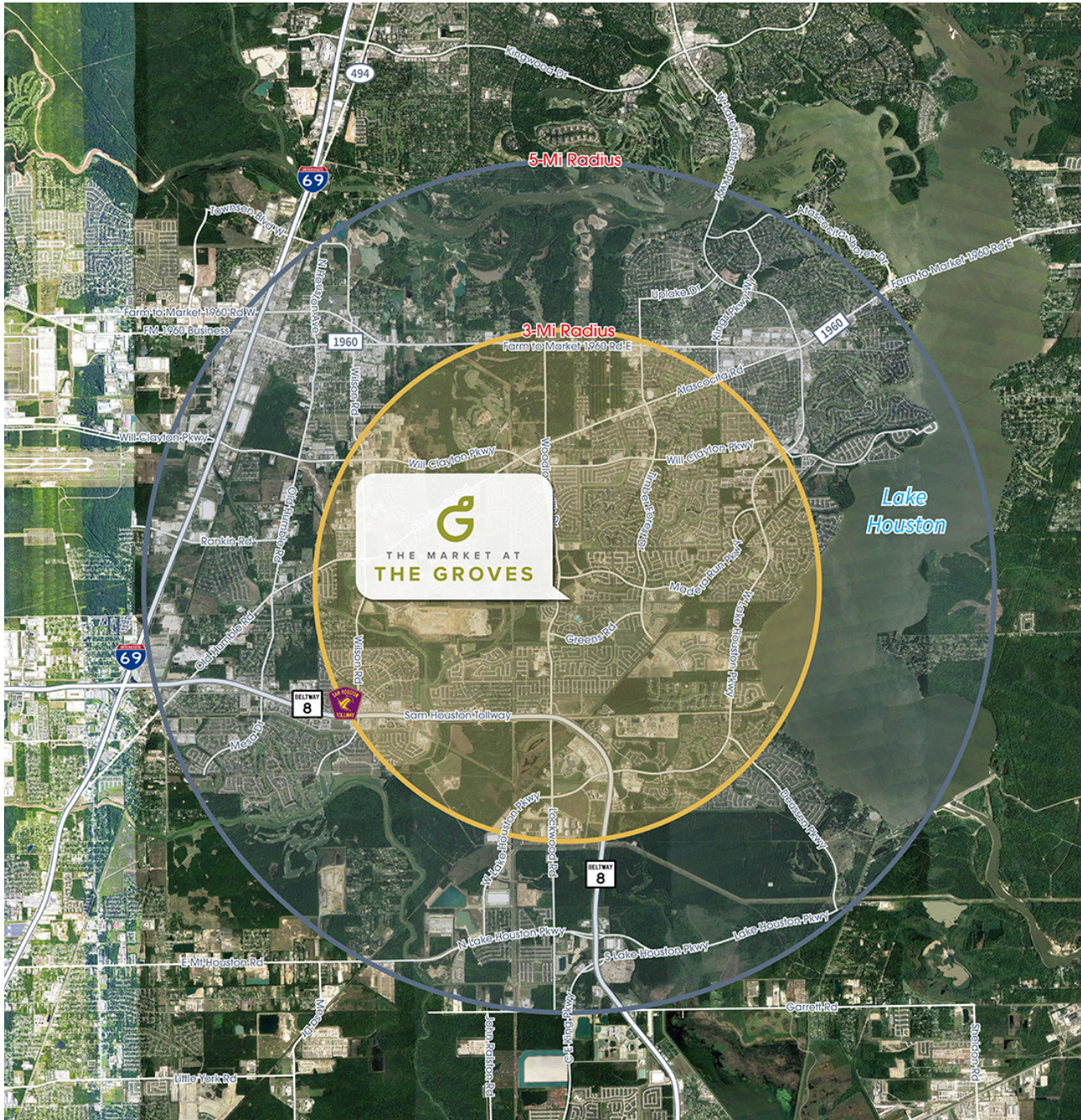
713.782.9000  
read-king.com





 | **Read King**  
Commercial Real Estate

# The Market at The Groves – Area Map



# The Market at The Groves – Demographics



	TRADE AREA	
	3 Miles	5 Miles
 Population	84,260	162,366
 Households	26,607	53,187
 Average Household Income	\$136,070	\$132,242
 Daytime Population	13,615	40,416

# The Market at The Groves – Trade Area Aerial



 The Market at The Groves – Site Plan



# G The Market at The Groves – About

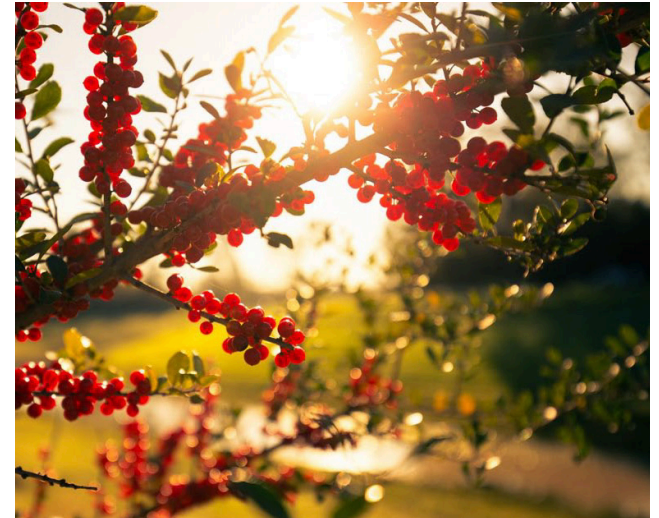


H-E-B anchored center located at the entrance of The Groves - a 1,000 acre master-planned community



Surrounded by dense residential development with +26,000 homes within a 3-mile radius

Primary trade area: Over 84,000 residents with an average household income over \$136,000





### For In-Line Leasing Opportunities

Matt McKinnerney

Leasing Representative

[mmckinnerney@read-king.com](mailto:mmckinnerney@read-king.com)

713.980.4722

Lane Pleason

Leasing Representative

[lane@read-king.com](mailto:lane@read-king.com)

713.980.4753

### For Pad Sites

Jeanie Gibbs, CCIM

Vice President – Brokerage Services

[jeanie@read-king.com](mailto:jeanie@read-king.com)

281.923.5318

Erin Dyer

Vice President – Brokerage Services

[edyer@read-king.com](mailto:edyer@read-king.com)

832.647.6050



713.782.9000

[read-king.com](http://read-king.com)

1900 W LOOP SOUTH

SUITE 1250

HOUSTON, TX 77027