

# KINGWOOD PLACE

Highway 59 & Northpark Drive | Kingwood, TX 77339



MATT MCKINNERNEY  
713.980.4722  
mmckinnerney@read-king.com

LANE PLEASON  
713.980.4753  
lpleason@read-king.com


JULIAN FERTITTA  
713.400.2132  
jfertitta@read-king.com

# Kingwood Place – Property Information

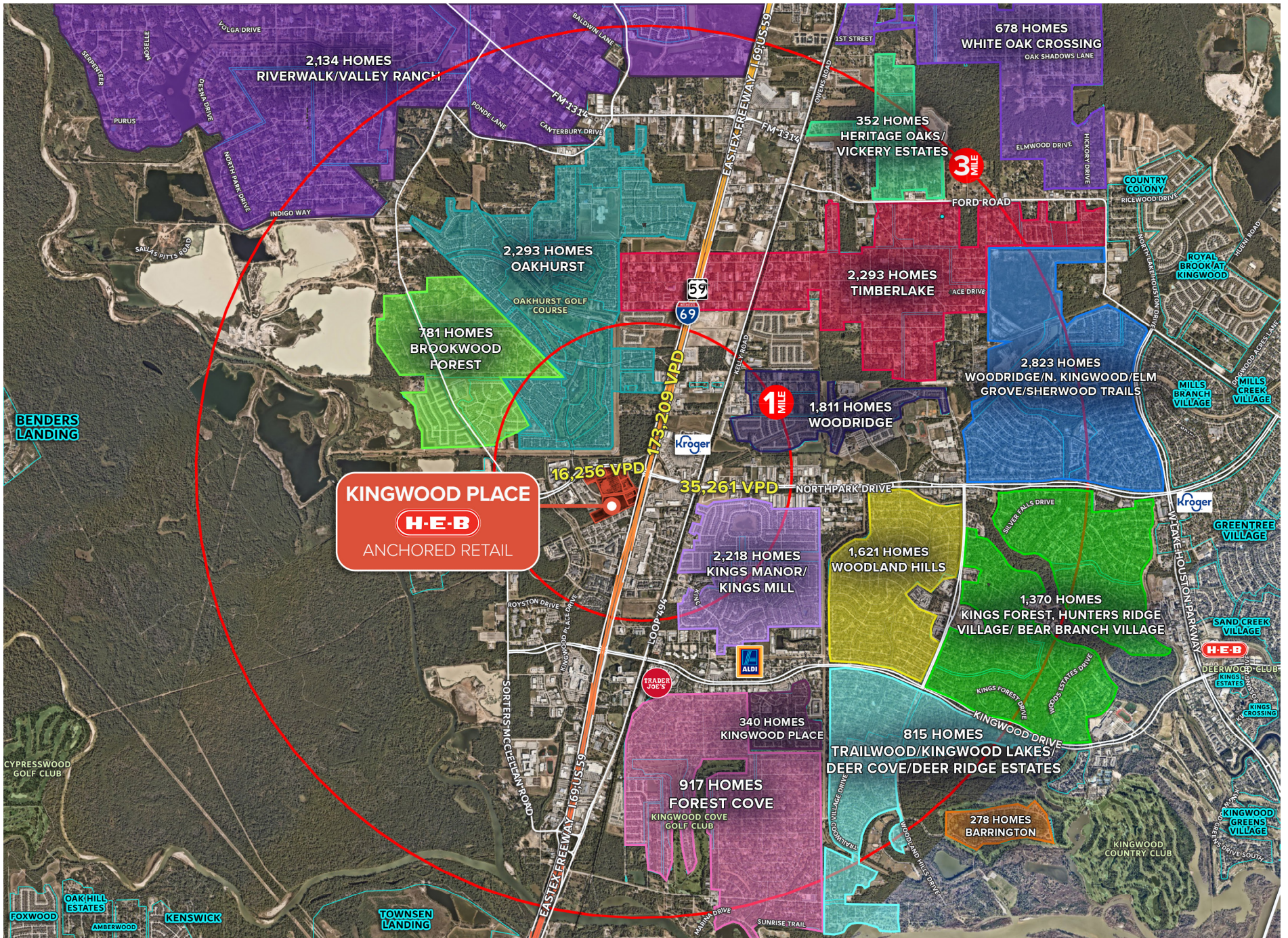


## Property Highlights

- H-E-B Anchored retail development with ±2.7 Million visitors in 2025; the Top Visited H-E-B within a 15-mile radius (*Placer.ai*)
- Easy access to Eastex Freeway and multiple points of access at signalized intersections along Northpark Drive & Eastex Freeway Feeder Road
- Primary Trade Area: Over 22,000 households with an average household income of \$116,000 within a 3-mile radius

	TRADE AREA		
	1 MILE	3 MILES	5 MILES
 2025 Population	11,932	57,245	127,887
 Est. Households	5,361	22,076	46,225
 Est. Average Household Income	\$125,851	\$116,856	\$126,202
 Total Daytime Pop.	10,120	57,760	125,048

# Dense Residential & Established Schools



# Kingwood Place – Site Plan



SUITE	TENANT	SIZE
A-100	Twin Liquors	3,500
A-200	Tropical Smoothie Café	1,400
A-300	Milano Nail Spa	4,243
A-400	Nukumi Steak House	4,080
A-500	Great Clips	1,100
A-600	AVAILABLE	1,603
A-700	Teriyaki Madness	1,378
A-800	Floors for Living	2,725
C-100	Chicken Salad Chick	2,605
C-200	GoHealth	2,717
C-300	AVAILABLE	1,100
C-400	Neon Blonde Salon	1,504
C-500	Crust Pizza	2,783
C-600	UrgentVet	2,537
C-650	Bubbly Paws	1,679
C-700	European Wax Center	1,638
C-800	Jersey Mike's	1,445
C-900	Any Lab Test Now	1,200
C-1000	AVAILABLE	1,800
D-100	Starbucks	2,100
D-200	4Ever Young	1,504
D-300	AVAILABLE	1,504
D-400	Dentists of Northpark	3,000

# Retail Snapshot



# Retail Snapshot



±1,603 SF  
IN-LINE SPACE  
AVAILABLE

**Floors for Living**  
*The Flooring Experts™ - no you don't have to be.*

**TWIN LIQUORS**

**tropical CAFE**  
SMOOTHIE

Great Clips®

**TERIYAKI**  
MADNESS

**MILANO NAIL SPA**

**NUKUMI**  
ICE CREAM

**BROOKER'S**  
ICE CREAM

±1,100 SF  
IN-LINE SPACE  
AVAILABLE

**GoHealth**  
URGENT CARE

**CHICKEN SALAD CHICK**

**EUROPEAN WAX CENTER**

UrgentVet

**CRUST**  
PIZZA

**Jersey Mike's**

**LUPE & TORTILLA**

**CHASE**

**NORTH PARK DRIVE**

**STARBUCKS**

**ANYLABTEST**  
NOW

**4EVERYOUNG**  
ANTI AGING SOLUTIONS

**H-E-B**

±2.7 MILLION VISITS  
IN 2025  
- PLACER.AI

±1,800 SF  
END CAP SPACE  
AVAILABLE

±1,504 SF  
IN-LINE SPACE  
AVAILABLE

**FUTURE MULTIFAMILY**  
261 UNITS  
17.28 AC

**1.82 AC**  
PAD SITE  
AVAILABLE

# Kingwood Place – Property Photos



**For In-Line Leasing Opportunities**

**Matt McKinnerney**

Vice President – Leasing  
mmckinnerney@read-king.com  
713.980.4722

**Lane Pleason**

Vice President – Leasing  
lpleason@read-king.com  
713.980.4753

**Julian Fertitta**

Assoicate – Leasing  
jfertitta@read-king.com  
713.400.2132



713.782.9000  
read-king.com

1900 W LOOP SOUTH  
SUITE 1250  
HOUSTON, TX 77027