

# KINGWOOD PLACE

Highway 59 & Northpark Drive | Kingwood, TX 77339



MATT MCKINNERNEY  
713.980.4722  
mmckinnerney@read-king.com

LANE PLEASON  
713.980.4753  
lpleason@read-king.com





JULIAN FERTITTA  
713.400.2132  
jfertitta@read-king.com

# Kingwood Place – Property Information

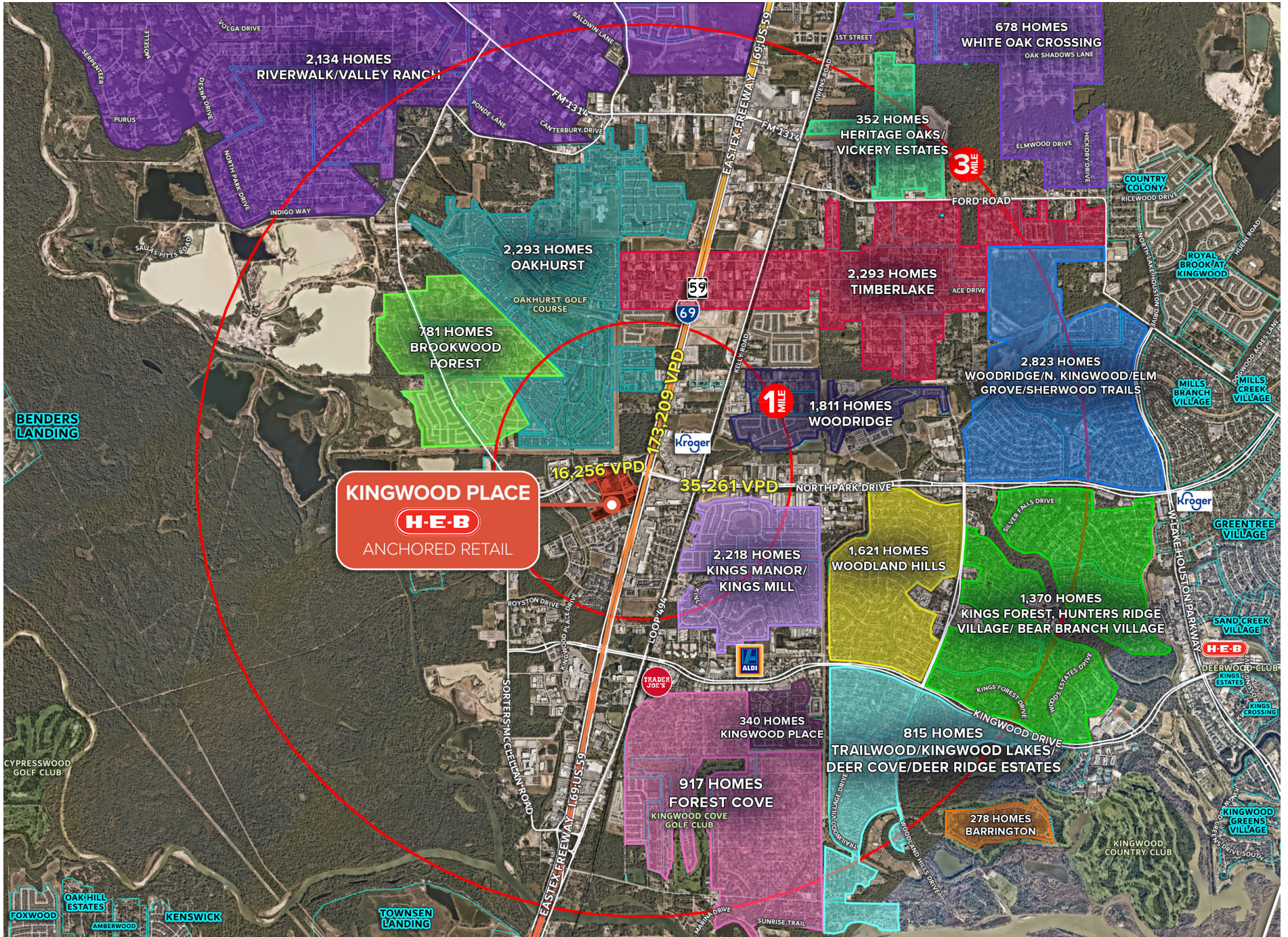


## Property Highlights

- H-E-B Anchored retail development with ±2.7 Million visitors in 2025; the Top Visited H-E-B within a 15-mile radius (*Placer.ai*)
- Easy access to Eastex Freeway and multiple points of access at signalized intersections along Northpark Drive & Eastex Freeway Feeder Road
- Primary Trade Area: Over 22,000 households with an average household income of \$116,000 within a 3-mile radius

	TRADE AREA		
	1 MILE	3 MILES	5 MILES
 2025 Population	11,932	57,245	127,887
 Est. Households	5,361	22,076	46,225
 Est. Average Household Income	\$125,851	\$116,856	\$126,202
 Total Daytime Pop.	10,120	57,760	125,048

# Dense Residential & Established Schools



# Kingwood Place – Site Plan



SUITE	TENANT	SIZE
A-100	Twin Liquors	3,500
A-200	Tropical Smoothie Café	1,400
A-300	Milano Nail Spa	4,243
A-400	Nukumi Steak House	4,080
A-500	Great Clips	1,100
A-600	Booker's Founding Flavors Ice	1,603
A-700	Teriyaki Madness	1,378
A-800	Floors for Living	2,725
C-100	Chicken Salad Chick	2,605
C-200	GoHealth	2,717
<b>C-300</b>	<b>AVAILABLE</b>	<b>1,100</b>
C-400	Neon Blonde Salon	1,504
C-500	Crust Pizza	2,783
C-600	UrgentVet	2,537
C-650	Bubbly Paws	1,679
C-700	European Wax Center	1,638
C-800	Jersey Mike's	1,445
C-900	Any Lab Test Now	1,200
<b>C-1000</b>	<b>AVAILABLE</b>	<b>1,800</b>
D-100	Starbucks	2,100
<b>D-200</b>	<b>AVAILABLE</b>	<b>1,504</b>
D-300	4Ever Young	1,408
D-400	Dentists of Northpark	3,000

# Retail Snapshot



# Retail Snapshot



**Floors for Living**  
 The Flooring Experts™ - no you don't have to be.  
**TWIN LIQUORS**  
**tropical CAFE**  
 SMOOTHIE  
 Great Clips®  
**TERIYAKI MADNESS**  
**MILANO NAIL SPA**  
 NUKUMI ICE CREAM  
 BROOKER'S ICE CREAM

**±1,100 SF**  
**IN-LINE SPACE**  
**AVAILABLE**

**GoHealth URGENT CARE**  
**CHICKEN SALAD CHICK**  
**EUROPEAN WAX CENTER**  
 UrgentVet  
**CRUST PIZZA**  
**Jersey Mike's**

**LUPE & TORTILLA**

**CHASE**

**H-E-B**  
**±2.7 MILLION VISITS**  
**IN 2025**  
 PLACER.AI

**±1,800 SF**  
**END CAP SPACE**  
**AVAILABLE**

**NORTH PARK DRIVE**

**STARBUCKS**  
**ANYLABTEST NOW**  
**4EVERYOUNG**  
 ANTI AGING SOLUTIONS

**±1,504 SF**  
**IN-LINE SPACE**  
**AVAILABLE**

**FUTURE MULTIFAMILY**  
 261 UNITS  
 17.28 AC

**1.82 AC**  
**PAD SITE**  
**AVAILABLE**

# Kingwood Place – Property Photos



**For In-Line Leasing Opportunities**

**Matt McKinnerney**

Vice President – Leasing  
mmckinnerney@read-king.com  
713.980.4722

**Lane Pleason**

Vice President – Leasing  
lpleason@read-king.com  
713.980.4753

**Julian Fertitta**

Assoicate – Leasing  
jfertitta@read-king.com  
713.400.2132



713.782.9000  
read-king.com

1900 W LOOP SOUTH  
SUITE 1250  
HOUSTON, TX 77027